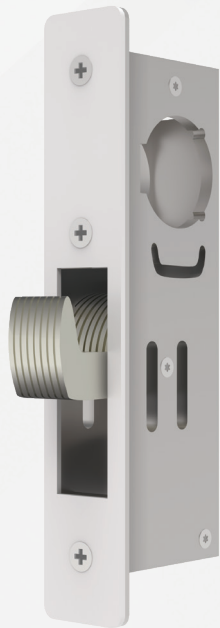


YKK AP[®]

Commercial
Standard Entrance
Hardware



P-2101:
Hook Lock

H-3211:
Threshold
Bolt



P-2242:
Header
Bolt



P-2151:
Flush
Bolt



Description

- Adams Rite[®] series Hookbolt Lock, Header, Threshold and Flushbolts. Standard backset is 1-1/2" (medium & wide stile doors).
- Assembly accepts any standard 1-5/32" diameter mortised cylinder, thumbturn cylinder, or dummy cylinder. All operating cylinder types require MS cam.
- Considered maximum security for YKK AP standard and upgraded locking devices.

Compatible Entrances

35D/50D, 40M/50M & 35H/50H

YKK AP Part Numbers

P-2101: Hook Lock (1-1/2" backset)
P-2242: Header Bolt
H-3211: Threshold Bolt
P-2151: Flushbolt

Material Composition

Aluminum, Stainless Steel and Mill Finish

Hardware Vendor



ASSA ABLOY

Vendor Part or Series

Adams Rite[®] MS-1850 (Hook Lock 1-1/2" backset)
Adams Rite[®] 4016 (Header Bolt)
Adams Rite[®] 4015 (Threshold Bolt)
Adams Rite[®] MS-1880 (Flushbolt)

ProTek[®]

Our ProTek[®] pair 35H/50H entrance doors with a non-emergency egress, employ a five point locking system to ensure that they remain secured during the strong cyclical winds associated with hurricanes. The active leaf employs a three-point locking system that features a single actuation system for ease of use, keyed exterior cylinder and thumbturn. The inactive leaf utilizes a two point locking system that is activated by an interior thumbturn.

P-2101 / P-2242 / H-3211 / P-2151

Standard Five-Point Locking System